

**VICI Safety Products** **NEW**

VICI strives to provide customers with the best solutions for their problems to make the work better and/or easier, with respect to environment and health.

The benefits of the new VICI Jour Safety products are:

- **Saving costs of solvents**
- **Avoiding hazardous air in the laboratories**
- **Increasing reproducibility of chromatographic analyses**

For that reason VICI Jour developed:

- The VICI Safety Exhaust Filter
- The VICI Safety Air Inlet Filter
- The VICI Safety Caps



## VICI Safety Exhaust Filter

### VICI Safety Exhaust Filter

- Prevents pollution of ambient air with volatile compounds
- Large Capacity
- Long Lifetime
- Version with Breakthrough Detector available
- Universal 1/4"-28 connection
- Fits all Caps of VICI
- Adapter to competitor products available

VICI has developed a new VICI Exhaust Filter with an increased capacity and lifetime and for more safety, this filter is equipped with a Breakthrough Detector.

This detector recognizes trace amounts of acetone, acetonitrile, ethanol, ethyl acetate, methanol, methylene chloride and THF.

When the absorbent is saturated breakthrough occurs and causes a color change in the detector from orange/pink to dark purple.

After the detector itself a small charcoal filter absorbs the vapors.

#### SPECS

##### Material

Filter housing: POM  
Detector housing: PC  
Frit: PE  
O-ring: NBR

##### Dimensions

1/4"-28

##### Breakthrough Detector

Easy detection of breakthrough point/saturation of the filter

##### Note

Disposal of the saturated filters has to be done according the local rules for chemical waste



unexposed

exposed



The **benefits** of this detector:

- No doubt if the filter is still working or not.
- Color change?  
Exchange the filter!
- The Exhaust Filter has only to be exchanged when the filter is saturated.

**Not too early, not too late.  
Always at the right time!**

The Exhaust Filter absorbs the volatile organic compounds from the waste solution of a solvent line.

When filling a waste-bottle or waste-canister, volatile organic compounds are forced out of the bottle/canister.

Because it is a waste solution, not much care is taken and the volatile compounds pollute the air in the lab. The result can be: headache, sleepiness, illness.

**With this Filter a HPLC system can be run in every room, even when there is inadequate ventilation.**

VICI Safety Exhaust Filter

**SPECS**

**Material**

Filter housing: POM  
 Detector housing: PC  
 Frit: PE  
 O-ring: NBR\*\*

**Dimensions**

1/4"-28

**Breakthrough Detector**

Easy detection of breakthrough point/saturation of the filter

**Old versions**

of the Exhaust Filters are delivered until Mai 1st, 2010.

All Filters delivered after this date are filled with the new absorbent

**Tech Tip**

Acetonitile and water form an "azeotropic" mixture at 85% acetonitrile. Due to this physical property, the vapor of an acetonitrile/water mixture always corresponds to the 85/15 mixture.

This explains the non-linearity of the lifetime for acetonitrile compared to methanol

**Note**

Disposal of the saturated filters has to be done according the local rules for chemical waste

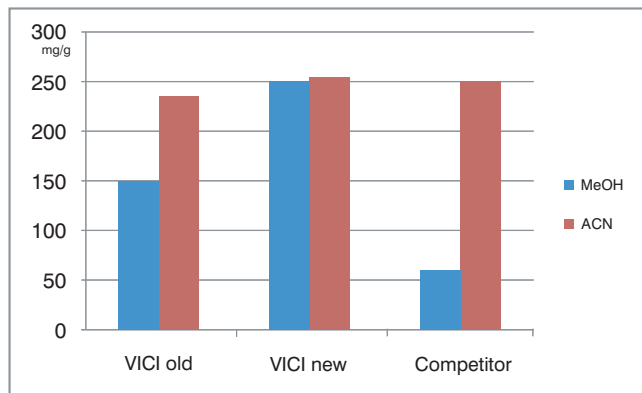
\* based on results of our tests (water/organics = 50/50; flow rate 1.0 ml/min during the day, 0.5 ml/min overnight, 0.1 ml/min during week-ends)

\*\* not a wetted part



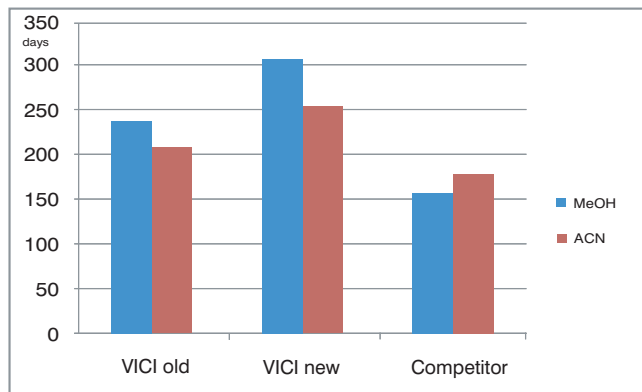
**VICI Safety Exhaust Filter**

VICI always strives to improve the products and in this way VICI could optimize the absorbent. The new absorbent has an increased capacity.



This excellent capacity leads to longer lifetime of the Exhaust Filter:

- up to 10 months\* for methanol
- up to 8 months\* for acetonitrile



Since Mai 2010 we deliver our Exhaust Filters with the new absorbent

**Larger Capacity = Longer Lifetime = Lower Costs**



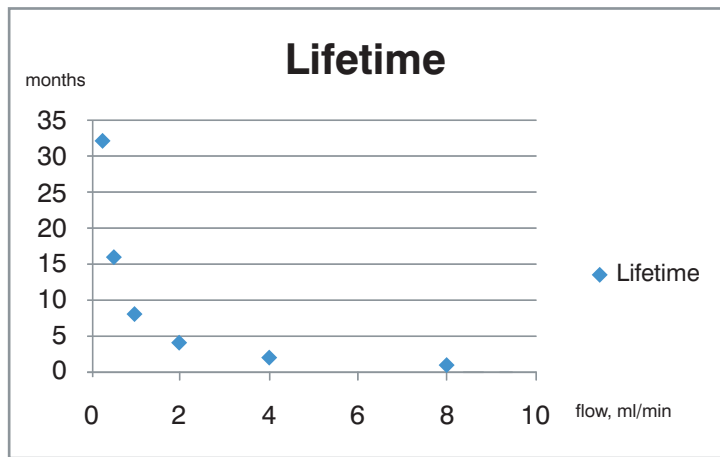
VICI Safety Exhaust Filter

VICI Safety Exhaust Filter

The lifetime of the Exhaust Filter depends on:

- The composition of the mobile phase
- The flow rate
- The ambient temperature: A higher temperature leads to an increased vapor pressure of the volatile compound.

The (theoretical) lifetime of an Exhaust Filter, depending on the flow rate can be shown as:



General rules for the lifetime:

- Double the flow rate halves the lifetime @ constant composition and temperature.
- Halve the flow rate doubles the lifetime @ constant composition and temperature.

VICI Safety Exhaust Filter

Part No.	Description
JR-S-20005	Safety Exhaust Filter with Detector <b>NEW</b>
JR-S-20002	Safety Exhaust Filter (without Detector)
JR-S-40004	Adapter connecting JR-S-20005 and JR-S-20002 in SCAT® Waste Caps and A.I.T Smart Waste Caps



JR-S-20005



JR-S-20002



JR-S-40004

SPECS

**Material**  
 Filter housing: POM  
 Detector housing: PC  
 Frit: PE  
 O-ring: NBR \*

**Dimensions**  
 1/4"-28

**Breakthrough Detector**  
 Easy detection of breakthrough point/saturation of the filter

**Old versions**  
 of the Exhaust Filters are delivered until Mai 1st, 2010. All Filters delivered after this date are filled with the new absorbent

**Tech Tip**  
 Acetonitrile and water form an "azeotropic" mixture at 85% acetonitrile. Due to this physical property, the vapor of an acetonitrile/water mixture always corresponds to the 85/15 mixture. This explains the non-linearity of the lifetime for acetonitrile compared to methanol

**Note**  
 Disposal of the saturated filters has to be done according to the local rules for chemical waste

\* not a wetted part



**SPECS**

**Material**

Housing: PP  
 Filter: Cellulose  
 O-ring: NBR\*

**Connection**

1/4"-28 to Cap  
 Luer female for filter

**Note**

The 0.20 µm filter prevents bacterial contamination of the solution

**Pressure rating**

1.5 psi (0.1 bar)

\* not a wetted part



**VICI Safety Air Inlet Valve**

- No evaporation of the volatile compounds into the lab-air
- Better composition stability of the mobile phases
- Less shift of retention times
- No bacterial contamination

Vapors of the solution in the bottle cannot go through the Air Inlet Valve, they are blocked by the check valve: The composition of the mobile phase will remain stable, resulting in constant retention times.

The check valve regulates the pressure when the negative pressure reaches 1.5 psi or 0.1 bar.

This small negative pressure prevents evaporation of the liquid (lower vapor pressure) and still guarantees the stability of the flow rate. A negative pressure which is too high can influence the aspiration of a constant flow.

The Air Inlet Valve consists of a 0.20 µm Cellulose filter that keeps your liquid free of bacteria and dust particles.

The lifetime of the check valve and the filter depend on the intensity of use and the quality of the ambient air.

To guarantee proper function of the check valve it is recommended that the Air Inlet Valve and filter are replaced after 6-7 months of use.

**VICI Air Inlet Valve**

Part No.	Description
JR-S-20003	Safety Air Inlet Valve, incl. 4 mm filter
JR-S-20009	Safety Air Inlet Valve, incl. 15 mm filter
JR-S-20006	Safety Air Inlet Valve without filter

**NEW**



JR-S-20003



JR-S-20009



JR-S-20006

**Spare Parts**

Part No.	Description
JR-S-20007	Cellulose filter, 0.2 µm, 4 mm, for Air Inlet Valve
JR-S-20008	Cellulose filter, 0.2 µm, 15 mm, for Air Inlet Valve

**NEW**

## GL45 Safety Caps

### GL45 Safety Caps

- Prevent evaporation of volatile compounds
- Fit to all bottles with GL45 thread
- 2, 3 or 4 ports available
- Stopcocks for perfect interrupting of solvent lines
- Stopcocks rated up to 72 psi gas @ 25°C

#### Sealing:

The GL45 Safety Caps seal to the bottle with an O-ring (EPDM) which is resistant to the commonly used HPLC solvents.

In case improved chemical resistance is required (e.g. for halogenated hydrocarbons) we offer additional a FEP-coated O-ring.

#### Tube connection:

All ports can fit 1/8" and 1/16" OD tubing. Bottom sealing barbed adapter to connect a 1/8" (3.2 mm) ID tubing is available.

#### Closing unused ports:

Close the ports with the stopcock.

### VICI Safety Caps GL45

Part No.	Description
JR-S-11011	VICI Safety Cap, 2 ports, incl. nuts and ferrules
JR-S-11012	VICI Safety Cap, 3 ports, incl. nuts and ferrules
JR-S-11013	VICI Safety Cap, 4 ports, incl. nuts and ferrules
JR-S-40008	O-ring, FEP coated, GL45

### Spare Parts

Part No.	Description
JR-55070-10	Nut, PPS, flangeless, 1/16", 1/4"-28, 10 pcs
JR-55071-10	Nut, PPS, flangeless, 1/8", 1/4"-28, 10 pcs
JR-041-10	Ferrule, ETFE, 1/16", 10 pcs
JR-051-10	Ferrule, ETFE, 1/8", 10 pcs
JR-075013	Barbed hose adapter, 1/8" ID tubing
JR-55080-10	Adapter, PP, fingertight sleeve, natural, 10 pcs
JR-55081-10	Adapter, PP, fingertight sleeve, white, 10 pcs
JR-55082-10	Adapter, PP, fingertight sleeve, dark grey, 10 pcs
JR-55083-10	Adapter, PP, fingertight sleeve, black, 10 pcs
JR-55084-10	Adapter, PP, fingertight sleeve, lavender, 10 pcs
JR-55085-10	Adapter, PP, fingertight sleeve, red, 10 pcs
JR-55086-10	Adapter, PP, fingertight sleeve, yellow, 10 pcs
JR-55087-10	Adapter, PP, fingertight sleeve, orange, 10 pcs
JR-55088-10	Adapter, PP, fingertight sleeve, brown, 10 pcs
JR-55089-10	Adapter, PP, fingertight sleeve, green, 10 pcs
JR-55090-10	Adapter, PP, fingertight sleeve, blue, 10 pcs
JR-55091-10	Adapter, PP, fingertight sleeve, purple, 10 pcs



JR-S-11011



JR-S-11012



JR-S-11013

### SPECS

#### Material

Closure: PP  
 Insert: PTFE  
 Nuts: PPS  
 Ferrules: ETFE  
 Sleeves: PP  
 Adapter: PA/PP  
 Stopcocks: CTFE  
 O-ring: EPDM  
 alternative: FEP-coated

(see Chemical Resistance chart on page 14-15)

#### Connections

1/4"-28

#### Delivery

1 set 1/16" nut/ferrule/sleeve  
 1, 2 or 3 sets 1/8" nut/ferrule/sleeve  
 Additional nuts and ferrules for the bottom side

#### Note

One port has to be reserved for the Exhaust Filter (see page 2-4) or the Air Inlet Valve (see page 5)



JR-075013

**SPECS**

**Material**

Closure: PP  
 Insert: PTFE  
 Nuts: PPS  
 Ferrules: ETFE  
 Sleeves: PP  
 Adapter: PA/PP  
 O-ring: EPDM  
 alternative: FEP-coated

(see Chemical Resistance chart on page 14-15)

**Connections**

1/4"-28

**Delivery**

1 set 1/16" nut/ferrule/sleeve  
 1, 2 or 3 sets 1/8" nut/ferrule/sleeve per port

**Note**

One port has to be reserved for the Exhaust Filter (see page 2-4) or the Air Inlet Valve (see page 5)



Insert for JR-S-11006  
 JR-S-11005 will be delivered without the center connection



JR-075013



JR-201999

**GL45 VICI Caps**

- Prevent evaporation of volatile compounds
- Fit to all bottles with GL45 thread
- 2, 3, 4, 6 and 7 ports available

**Sealing:**

The GL45 Caps seal to the bottle with an O-ring (EPDM) which is resistant to the commonly used HPLC solvents.

In case improved chemical resistance is required (e.g. for halogenated hydrocarbons) we offer additional a FEP-coated O-ring.

**Tube connection:**

1 port is suitable for 1/16" tubing. All other ports can fit 1/8" and 1/16" OD tubing. Bottom sealing barbed adapter to connect a 1/8" (3.2 mm) ID tubing is available.

**Closing unused ports:**

Close the ports with Plug JR-409 (PEEK) or Plug JR-201999 (PP).

**VICI Caps GL45**

Part No.	Description
JR-S-11001	VICI Cap GL45, 2 ports, incl. nuts and ferrules
JR-S-11002	VICI Cap GL45, 3 ports, incl. nuts and ferrules
JR-S-11003	VICI Cap GL45, 4 ports, incl. nuts and ferrules
JR-S-11005	VICI Cap GL45, 6 ports, incl. nuts and ferrules
JR-S-11006	VICI Cap GL45, 7 ports, incl. nuts and ferrules
JR-S-40008	O-ring, FEP coated, GL45



JR-S-11001



JR-S-11002



JR-S-11003

**Spare Parts**

Part No.	Description
JR-55070-10	Nut, PPS, flangeless, 1/16", 1/4"-28, 10 pcs
JR-55071-10	Nut, PPS, flangeless, 1/8", 1/4"-28, 10 pcs
JR-041-10	Ferrule, ETFE, 1/16", 10 pcs
JR-051-10	Ferrule, ETFE, 1/8", 10 pcs
JR-075013	Barbed hose adapter, 1/8" ID tubing
JR-409	Plug, PEEK, 1/4"-28
JR-201999	Plug, PP, 1/4"-28

For sleeves, please see page 6 or page 61 of the VICI Jour 10 Int catalog

## DIN50 Safety Caps

### DIN50 Safety Caps **NEW**

- Prevent evaporation of volatile compounds
- Fit to all bottles or canisters with DIN50 thread
- 2, 3 or 4 ports available
- Stopcocks for perfect interrupting of solvent lines
- Stopcocks rated up to 72 psi gas @ 25°C

#### Sealing:

DIN50 Safety Caps seal to the bottle/canister with an O-ring behind a PTFE lip. The O-ring is therefore not a wetted part.

#### Tube connection:

All ports can fit 1/8" and 1/16" OD tubing. Bottom sealing barbed adapter to connect a 1/8" (3.2 mm) ID tubing is available.

#### Closing unused ports:

Close the ports with the stopcock.

### VICI Safety Caps DIN50

Part No.	Description
JR-S-15011	VICI Safety Cap DIN50, 2 ports, incl. nuts and ferrules
JR-S-15012	VICI Safety Cap DIN50, 3 ports, incl. nuts and ferrules
JR-S-15013	VICI Safety Cap DIN50, 4 ports, incl. nuts and ferrules



JR-S-15011



JR-S-15012



JR-S-15013

### Spare Parts

Part No.	Description
JR-55070-10	Nut, PPS, flangeless, 1/16", 1/4"-28, 10 pcs
JR-55071-10	Nut, PPS, flangeless, 1/8", 1/4"-28, 10 pcs
JR-041-10	Ferrule, ETFE, 1/16", 10 pcs
JR-051-10	Ferrule, ETFE, 1/8", 10 pcs
JR-075013	Barbed hose adapter, 1/8" ID tubing

For sleeves, please see page 6 or page 61 of the VICI Jour 10 Int catalog

### SPECS

#### Material

Closure: PP  
 Insert: PTFE  
 Nuts: PPS  
 Ferrules: ETFE  
 Sleeves: PP  
 Adapter: PA/PP  
 Stopcocks: CTFE  
 O-ring: EPDM/NBR

(see Chemical Resistance chart on page 14-15)

#### Connections

1/4"-28

#### Delivery

1 set 1/16" nut/ferrule/sleeve  
 1, 2 or 3 sets 1/8" nut/ferrule/sleeve  
 Additional nuts and ferrules for the bottom side

#### Note

One port has to be reserved for the Exhaust Filter (see page 2-4) or the Air Inlet Valve (see page 5)



JR-075013

**SPECS**

**Material**

Closure: PP  
 Insert: PTFE  
 Nuts: PPS  
 Ferrules: ETFE  
 Sleeves: PP  
 Adapter: PA/PP  
 O-ring: EPDM/NBR

(see Chemical Resistance chart on page 14-15)

**Connections**

1/4"-28

**Delivery**

1 set 1/16" nut/ferrule/sleeve  
 1, 2 or 3 sets 1/8" nut/ ferrule/sleeve

**Note**

One port has to be reserved for the Exhaust Filter (see page 2-4) or the Air Inlet Valve (see page 5)

**DIN50 VICI Caps** **NEW**

- Prevent evaporation of volatile compounds
- Fit to all bottles or canisters with DIN50 thread
- 2, 3, or 4 ports available

**Sealing:**

DIN50 Caps seal to the bottle/canister with an O-ring behind a PTFE lip. The O-ring is therefore not a wetted part.

tubing.

Bottom sealing barbed adapter for 1/8" (3.2 mm) ID tubing available.

**Closing unused ports:**

Close the ports with Plug JR-409 (PEEK) or Plug JR-201999 (PP).

**Tube connection:**

1 port is suitable for 1/16" tubing.  
 All other ports can fit 1/8" and 1/16" OD

**VICI Caps DIN50**

Part No.	Description
JR-S-15001	VICI Cap DIN50, 2 ports, incl. nuts and ferrules
JR-S-15002	VICI Cap DIN50, 3 ports, incl. nuts and ferrules
JR-S-15003	VICI Cap DIN50, 4 ports, incl. nuts and ferrules



**Spare Parts**

Part No.	Description
JR-55070-10	Nut, PPS, flangeless, 1/16", 1/4"-28, 10 pcs
JR-55071-10	Nut, PPS, flangeless, 1/8", 1/4"-28, 10 pcs
JR-041-10	Ferrule, ETFE, 1/16", 10 pcs
JR-051-10	Ferrule, ETFE, 1/8", 10 pcs
JR-075013	Barbed hose adapter, 1/8" ID tubing
JR-409	Plug, PEEK, 1/4"-28
JR-201999	Plug, PP, 1/4"-28

For sleeves, please see page 6 or page 61 of the VICI Jour 10 Int catalog



JR-075013



JR-201999

## GL38 VICI Caps

### GL38 VICI Caps **NEW**

- Prevent evaporation of volatile compounds
- Fit to all bottles with GL38/430 thread\*
- 2, 3 or 4 ports available

#### Sealing:

The GL38 Caps seals to the bottle with an O-ring (EPDM) which is resistant to the commonly used HPLC solvents.

In case improved chemical resistance is required (e.g. for halogenated hydrocarbons) we offer additional a FEP-coated O-ring.

#### Tube connection:

1 port is suitable for 1/16" tubing.

All other ports can fit 1/8" and 1/16" OD tubing.

Bottom sealing barbed adapter to connect a 1/8" (3.2 mm) ID tubing is available.

#### Closing unused ports:

Close the ports with Plug JR-409 (PEEK) or Plug JR-201999 (PP).

#### Color indication:

Colored PP sleeves can be fitted to all ports on the 2- and 3 port caps.

With the 4-port caps, the use of the PP sleeves is limited to two sleeves per cap (4 colors are included).

### VICI Caps GL38

Part No.	Description
JR-S-13001	VICI Cap GL38, 2 ports, incl. nuts and ferrules
JR-S-13002	VICI Cap GL38, 3 ports, incl. nuts and ferrules
JR-S-13003	VICI Cap GL38, 4 ports, incl. nuts and ferrules
JR-S-40009	O-ring, FEP coated, GL38



JR-S-13001



JR-S-13002



JR-S-13003

### Spare Parts

Part No.	Description
JR-S-40006	Adapter Ring, PTFE, VICI Caps GL38
JR-55070-10	Nut, PPS, flangeless, 1/16", 1/4"-28, 10 pcs
JR-55071-10	Nut, PPS, flangeless, 1/8", 1/4"-28, 10 pcs
JR-041-10	Ferrule, ETFE, 1/16", 10 pcs
JR-051-10	Ferrule, ETFE, 1/8", 10 pcs
JR-075013	Barbed hose adapter, 1/8" ID tubing
JR-409	Plug, PEEK, 1/4"-28
JR-201999	Plug, PP, 1/4"-28

For sleeves, please see page 6 or page 61 of the VICI Jour 10 Int catalog

### SPECS

#### Material

Closure: PP  
 Insert: PTFE  
 Nuts: PPS  
 Ferrules: ETFE  
 Sleeves: PP  
 Adapter: PA/PP  
 Adapter Ring: PTFE  
 O-ring: EPDM  
 Alternative: FEP-coated

(see Chemical Resistance chart on page 14-15)

#### Connections

1/4"-28

#### Delivery

1 set 1/16" nut/ferrule/sleeve  
 1, 2 or 3 sets 1/8" nut/ferrule/sleeve  
 Adapter ring

#### Note

One port has to be reserved for the Exhaust Filter (see page 2-4) or the Air Inlet Valve (see page 5)

\* GL38 thread is available in different variations. Please check the inside diameter of the neck:  
 For ID 21-24 mm use the GL38 Cap as is, i.e. without adapter (e.g. Wheaton® bottles).  
 For ID 24-28 mm use the GL38 Cap with the Adapter Ring (e.g. Nalgene® bottles).



JR-075013



JR-201999

**SPECS**

**Material**

Closure: PP  
 Insert: PTFE  
 Nuts: PPS/POM  
 Ferrules: ETFE/CTFE  
 Sleeves: PP  
 Adapter: PA/PP  
 Plug: PTFE  
 O-Ring: NBR

(see Chemical Resistance chart on page 14-15)

**Connections**

1/4"-28  
 1/2"-20

**Delivery**

1 set 1/16" nut/ferrule/sleeve  
 1 set 1/4" nut/ferrule  
 2 sets 1/8" nut/ferrule/sleeve  
 Plug 1/4"

**Note**

One port has to be reserved for the Exhaust Filter (see page 2-4) or the Air Inlet Valve (see page 5)

**DIN60 Waste Cap** NEW

- Prevents evaporation of volatile compounds
- Fits to all bottles and canisters with DIN60 thread
- Available with 4 ports
- 1/2"-20 port for 1/4" OD tubing available
- Port for angled, barbed adapter available

**Sealing:**

The DIN60 Cap seals to the bottle/canister with an O-ring behind a PTFE lip. The O-ring is therefore not a wetted part.

**Tube connection:**

3 ports can fit 1/8" and 1/16" OD tubing.  
 1 port is suitable for 1/4" OD tubing.  
 Bottom sealing barbed adapter to connect a 1/8" (3.2 mm) ID tubing is available.

**Closing unused ports:**

Close the 1/4"-28 ports with Plug JR-409 (PEEK) or JR-201999 (PP).  
 Close the 1/2"-20 port with the Plug JR-S-40007 (PTFE), which is included in the DIN60 Cap.

**VICI Waste Cap DIN60**

Part No.	Description
JR-S-16003	VICI Waste Cap DIN60, 4 ports, incl. nuts, ferrules and Plug 1/4"
JR-S-16013	VICI Waste Cap DIN60, 4 ports, thread to barbed, incl. nuts and ferrules, without angled barbed adapter



JR-CFL-4D  
 JR-CFL-CB4KF-S



JR-S-40106



JR-S-40104



JR-S-16013 +  
 JR-S-40108



JR-S-16003



JR-075013



JR-201999

**Spare Parts**

Part No.	Description
JR-55070-10	Nut, PPS, flangeless, 1/16", 1/4"-28, 10 pcs
JR-55071-10	Nut, PPS, flangeless, 1/8", 1/4"-28, 10 pcs
JR-041-10	Ferrule, ETFE, 1/16", 10 pcs
JR-051-10	Ferrule, ETFE, 1/8", 10 pcs
JR-075013	Barbed hose adapter, 1/8" ID tubing
JR-CFL-4D	Nut, POM, for collapsible ferrule, 1/4", 1/2"-20
JR-CFL-CB4KF-S	Ferrule, CTFE, collapsible, 1/4"
JR-409	Plug, PEEK, 1/4"-28
JR-201999	Plug, PP, 1/4"-28
JR-S-40007	Plug, PTFE, 1/2"-20
JR-S-40104	Adapter, angled, PA, barbed for 4mm ID tubing to thread
JR-S-40106	Adapter, angled, PA, barbed for 6mm ID tubing to thread
JR-S-40108	Adapter, angled, PA, barbed for 8mm ID tubing to thread

For sleeves, please see page 6 or page 61 of the VICI Jour 10 Int catalog

S51 Waste Cap / S61 Waste Cap

S51 Waste Cap / S61 Waste Cap **NEW**

- Prevent evaporation of volatile compounds
- Fit to all bottles and canisters with S51 and S61 thread
- Available with 4 ports
- 1/2"-20 port for 1/4" OD tubing available
- Port for angled, barbed adapter available

**Sealing:**

S51 and S61 Caps seal to the bottle/canister with an O-ring behind a PTFE lip. The O-ring is therefore not a wetted part.

**Tube connection:**

3 ports can fit 1/8" and 1/16" OD tubing.  
1 port is suitable for 1/4" OD tubing.  
Bottom sealing barbed adapter to connect a 1/8" (3.2 mm) ID tubing is available.

**Closing unused ports:**

Close the 1/4"-28 ports with Plug JR-409 (PEEK) or JR-201999 (PP).  
Close the 1/2"-20 port with the Plug JR-S-40007 (PTFE), which is included in the S51 Cap and in the S61 Cap.

**VICI Waste Cap S51 / S61**

Part No.	Description
JR-S-15103	VICI Waste Cap S51, 4 ports, incl. nuts, ferrules and Plug 1/4"
JR-S-15113	VICI Waste Cap S51, 4 ports, thread to barbed, incl. nuts and ferrules, without angled barbed adapter
JR-S-16103	VICI Waste Cap S61, 4 ports, incl. nuts, ferrules and Plug 1/4"
JR-S-16113	VICI Waste Cap S61, 4 ports, thread to barbed, incl. nuts and ferrules, without angled barbed adapter

**Spare Parts**

Part No.	Description
JR-55070-10	Nut, PPS, flangeless, 1/16", 1/4"-28, 10 pcs
JR-55071-10	Nut, PPS, flangeless, 1/8", 1/4"-28, 10 pcs
JR-041-10	Ferrule, ETFE, 1/16", 10 pcs
JR-051-10	Ferrule, ETFE, 1/8", 10 pcs
JR-075013	Barbed hose adapter, 1/8" ID tubing
JR-CFL-4D	Nut, POM, for collapsible ferrule, 1/4", 1/2"-20
JR-CFL-CB4KF-S	Ferrule, CTFE, collapsible, 1/4"
JR-409	Plug, PEEK, 1/4"-28
JR-201999	Plug, PP, 1/4"-28
JR-S-40007	Plug, PTFE, 1/2"-20
JR-S-40104	Adapter, angled, PA, barbed for 4mm ID tubing to thread
JR-S-40106	Adapter, angled, PA, barbed for 6mm ID tubing to thread
JR-S-40108	Adapter, angled, PA, barbed for 8mm ID tubing to thread

For sleeves, please see page 6 or page 61 of the VICI Jour 10 Int catalog



JR-S-15103



JR-S-15113 + JR-S-40108



JR-S-16103



JR-S-16113 + JR-S-40108



JR-S-40106



JR-S-40104

**SPECS**

**Material**

Closure: PP  
Insert: PTFE  
Nuts: PPS/POM  
Ferrules: ETFE/CTFE  
Sleeves: PP  
Adapter: PA/PP  
Plug: PTFE  
O-ring: NBR

(see Chemical Resistance chart on page 14-15)

**Connections**

1/4"-28  
1/2"-20

**Delivery**

1 set 1/16" nut/ferrule / sleeve  
1 set 1/4" nut/ferrule  
2 sets 1/8" nut/ferrule / sleeve per port  
Plug 1/4"

**Tech Tip**

The caps S51/S61 fit with some restrictions on DIN50 / DIN60 bottles or canisters

**Note**

One port has to be reserved for the Exhaust Filter (see page 2-4) or the Air Inlet Valve (see page 5)



JR-CFL-4D  
JR-CFL-CB4KF-S



JR-075013



JR-201999

B53 Waste Cap / B83 Waste Cap / GLS80 Waste Cap

**SPECS**

**Material**

Closure: PP  
 Insert: PTFE  
 Nuts: PPS/POM  
 Ferrules: ETFE/CTFE  
 Sleeves: PP  
 Adapter: PA/PP  
 Plug: PTFE  
 O-ring: NBR

(see Chemical Resistance chart on page 14-15)

**Connections**

1/4"-28  
 1/2"-20

**Delivery**

1 set 1/16" nut/ferrule/sleeve  
 1 set 1/4" nut/ferrule  
 2 or 3 sets 1/8" nut/ ferrule/sleeve  
 Plug 1/4"

**Note**

One port has to be reserved for the Exhaust Filter (see page 2-4) or the Air Inlet Valve (see page 5)



JR-S-15303



JR-S-15313 +  
JR-S-40108



JR-S-18304



JR-S-18314 +  
JR-S-40108



JR-S-18004



JR-S-18014 +  
JR-S-40108



JR-CFL-4D  
JR-CFL-CB4KF-S



JR-075013



JR-201999

**B53 Waste Cap / B83 Waste Cap / GLS80 Waste Cap** NEW

- Prevent evaporation of volatile compounds
- Fits to all bottles and canisters with B53, B83 and GLS80 thread
- Available with 4 ports (B53)
- Available with 5 ports (B83 and GLS80)
- 1/2"-20 port for 1/4" OD tubing available
- Port for angled, barbed adapter available

**Sealing:**

B53, B83 and GLS80 Caps seal to the bottle/canister with an O-ring behind a PTFE lip. The O-ring is therefore not a wetted part.

**Tube connection:**

3 ports can fit 1/8" and 1/16" OD tubing.  
 1 port is suitable for 1/4" OD tubing.

Bottom sealing barbed adapter to connect a 1/8" (3.2 mm) ID tubing is available.

**Closing unused ports:**

Close the 1/4"-28 ports with Plug JR-409 (PEEK) or JR-201999 (PP).

Close the 1/2"-20 port with the Plug JR-S-40007 (PTFE), which is included in the B53 Cap, in the B83 and in the GLS80 Cap.

**VICI Waste Cap B53 / B83 / GLS80**

Part No.	Description
JR-S-15303	VICI Waste Cap B53, 4 ports, incl. nuts/ferrules and Plug 1/4"
JR-S-15313	VICI Waste Cap B53, 4 ports, thread to barbed, incl. nuts and ferrules, without angled barbed adapter
JR-S-18304	VICI Waste Cap B83, 5 ports, incl. nuts/ferrules and Plug 1/4"
JR-S-18314	VICI Waste Cap B83, 5 ports, thread to barbed, incl. nuts and ferrules, without angled barbed adapter
JR-S-18004	VICI Waste Cap GLS80, 5 ports, incl. nuts/ferrules and Plug 1/4"
JR-S-18014	VICI Waste Cap GLS80, 5 ports, thread to barbed, incl. nuts and ferrules, without angled barbed adapter

**Spare Parts**

Part No.	Description
JR-55070-10	Nut, PPS, flangeless, 1/16", 1/4"-28, 10 pcs
JR-55071-10	Nut, PPS, flangeless, 1/8", 1/4"-28, 10 pcs
JR-041-10	Ferrule, ETFE, 1/16", 10 pcs
JR-051-10	Ferrule, ETFE, 1/8", 10 pcs
JR-S-40009	Barbed hose adapter, 1/8" ID tubing
JR-CFL-4D	Nut, POM, for collapsible ferrule, 1/4", 1/2"-20
JR-CFL-CB4KF-S	Ferrule, CTFE, collapsible, 1/4"
JR-409	Plug, PEEK, 1/4"-28
JR-201999	Plug, PP, 1/4"-28
JR-S-40007	Plug, PTFE, 1/2"-20
JR-S-40104	Adapter, angled, PA, barbed for 4mm ID tubing to thread
JR-S-40106	Adapter, angled, PA, barbed for 6mm ID tubing to thread
JR-S-40108	Adapter, angled, PA, barbed for 8mm ID tubing to thread

For sleeves, please see page 6 or page 61 of the VICI Jour 10 Int catalog



JR-S-40106



JR-S-40104

Safety-Coated Glass Bottles

SPECS

Material

Bottle: Borosilicate 3.3 glass  
 Cap: Polypropylene  
 Pouring Ring: Polypropylene

Pressure Rating

0.8 bar (11.6 psi)

Special Info

The Bottles are not suitable to be stressed with pressures above 0.8 bar (11.6 psi), but only for continuous helium sparging

The safety coating is not intended to replace safe working conditions and precautions in laboratories

Safety-Coated Glass Bottles

- Special design for helium sparging of LC mobile phases
- Safety coating to minimize risk of injury

VICI Jour Safety-Coated Glass Bottles are available in 0.25, 0.5, 1 and 2 L volume sizes.

These glass bottles with GL45 screw threading are made of chemical resistant Borosilicate 3.3 and coated on the outside with a layer of sturdy polymer. The chances of breaking the bottle, when dropping it, will decrease. Even if the bottle breaks, glass fragments will be kept

within the polymer coating. Solvents will be kept within the coating for a short while.

The coating also protects solvents against UV light up to 385 nm.

These safety-coated glass bottles can't be autoclaved.



Safety-Coated Glass Bottles

Part No.	Description
JR-9000-0011	Bottle, Glass, safety-coated, 0.25 L with solid cap
JR-9000-0012	Bottle, Glass, safety-coated, 0.5 L with solid cap
JR-9000-0005	Bottle, Glass, safety-coated, 1 L with solid cap
JR-9000-0010	Bottle, Glass, safety-coated, 2 L with solid cap

NEW

## Eco-Cap

### Eco-Cap

- Competitively priced alternative to sparge and deliver mobile phases
- Also available as bottle kit

The Eco-Cap is made of ETFE insert with polyethylene collar and has three holes for tubing insertion.

The Eco-Cap has no threading on the inside of the tubing ports – tubing can easily be inserted.



### Eco-Cap

Part No.	Description
JR-9000-0007	Eco-Cap, GL45, inkl. 1 x male luer plug
JR-9000-0013	Eco-Cap Kit, incl. 1L Safety Coated Bottle
JR-9000-0014	Eco-Cap Kit, incl. 2L Safety Coated Bottle

### Spare parts

Part No.	Description	Qty/pkg
JR-070350-10	Plug, PP, male luer	10

For polymeric tubing see pages 16–27.

### SPECS

#### Material

Screw collar: Polyethylene  
 Pouring ring: Polypropylene  
 Eco-Cap insert: ETFE  
 O-Rings: EPDM  
 Plugs: PEEK  
 Luer Plugs: Polypropylene  
 Others: see charts

#### Dimensions

For GL45 or S40 threads  
 (see chart)

#### Bores

Eco-Cap: 2 x 1/8", 1 x luer

#### Special Info

These caps are not usable for building up a helium atmosphere within in the solvent bottle, but only for continuous helium sparging

#### Tech Tip

Once the mobile phase is degassed, we recommend our Impermeable tubing between bottle cap and pump to prevent "regassing" of helium degassed solvents (see page 18)

**SPECS**

**Material (wetted parts)**

Tubing: PFA

Filter: PE

Ferrules: ETFE

**Dimension**

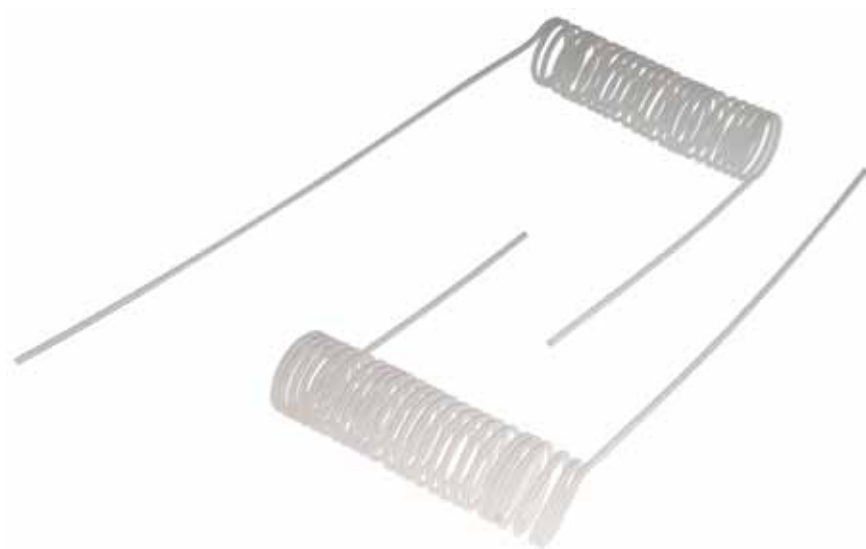
1/8" Tubing OD

**SolviFlex**

- Be 'mobile' with mobile phase bottles
- Ideal for use together with the VICI Safety Caps or VICI Caps
- Customized versions on request

The SolviFlex has a flexible telephone cable like PFA tubing which expands and contracts and consequently gives the flexibility to move mobile phase bottles on the bench. All SolviFlex assemblies consist of a biocompatible mobile phase

filter and all the required parts to connect it to any 1/4"-28 port.



**SolviFlex**

Part No.	Description
JR-6120-50030	Solviflex, assembly without cap